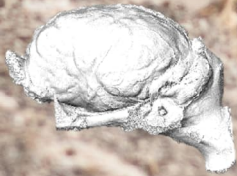


Master thesis in  
Paleontology

# Giddy-up the Brain

The evolution of horses on islands has led to rapid changes in size, mirroring those encountered at large time scales. This project aims at analyzing the tempo and mode of brain evolution at micro and macroevolutionary scales. We will obtain data via non-invasive imaging of skulls and produce 3D models to be studied quantitatively. We will test hypotheses on how modules of the brain evolve in this iconic group of mammals.



Digital endocast  
of a horse brain

**Contact & information:**

Marcelo R. Sánchez-Villagra:  
[m.sanchez@pim.uzh.ch](mailto:m.sanchez@pim.uzh.ch)

[www.msanchezlab.net](http://www.msanchezlab.net)